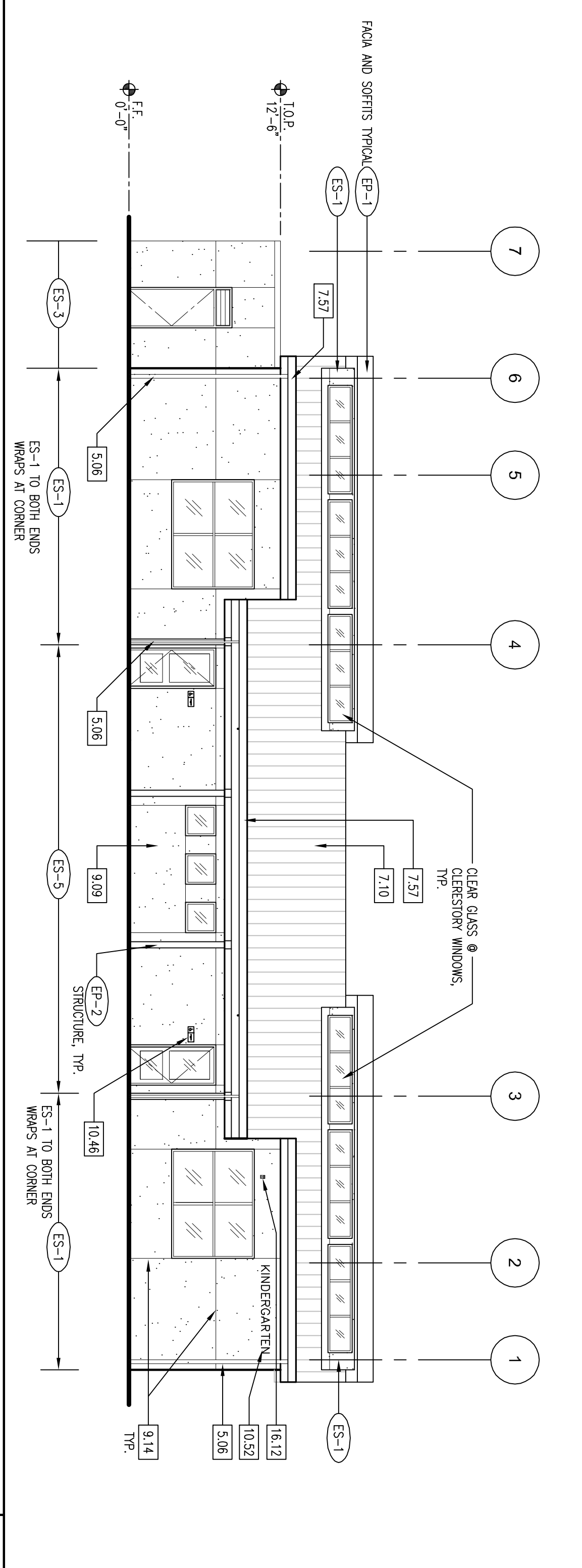


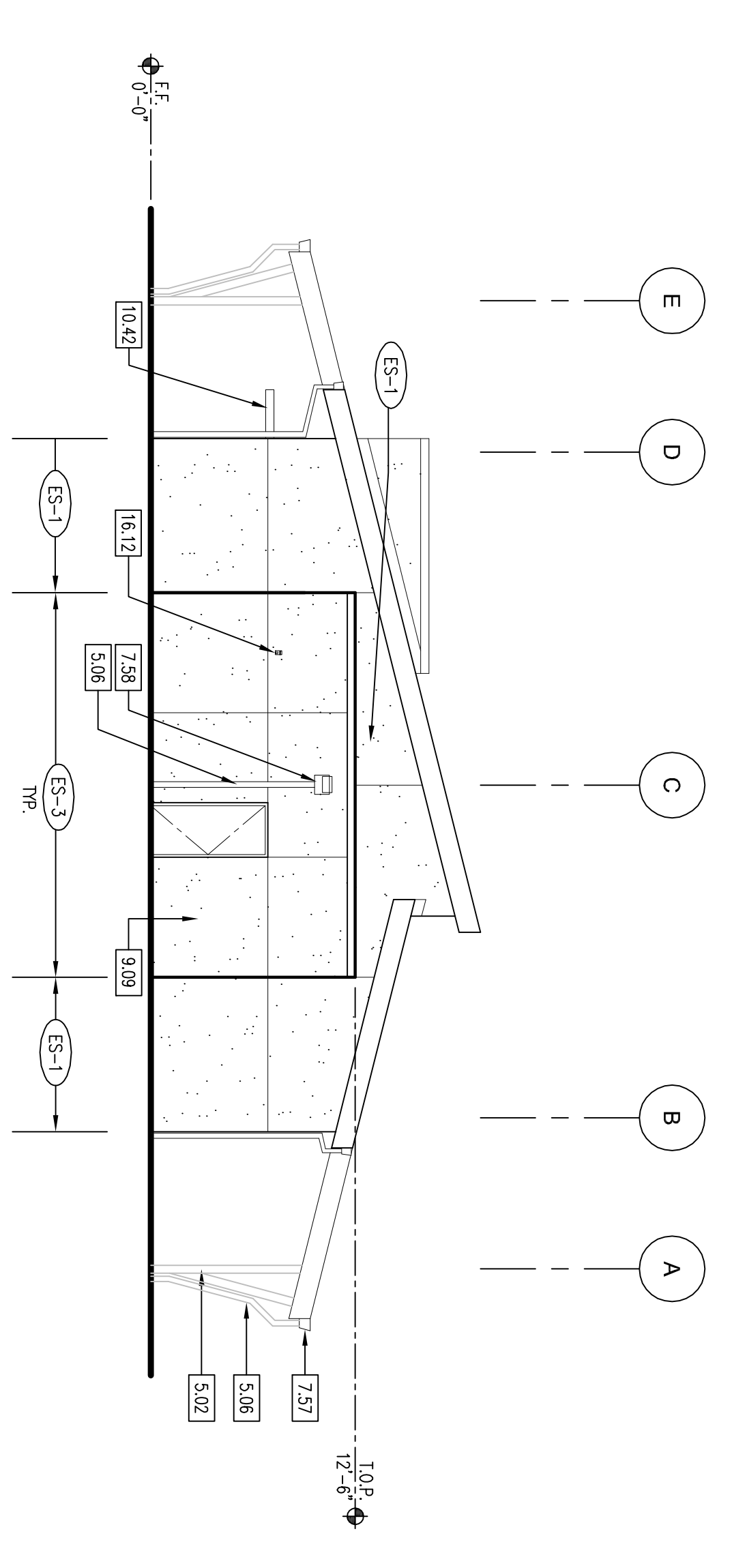
GENERAL NOTES - EXTERIOR ELEVATIONS

- All exterior glass to be Overlay 14 tinted glass, UN10.
- See Door Types and Window Types for location of tempered glass.

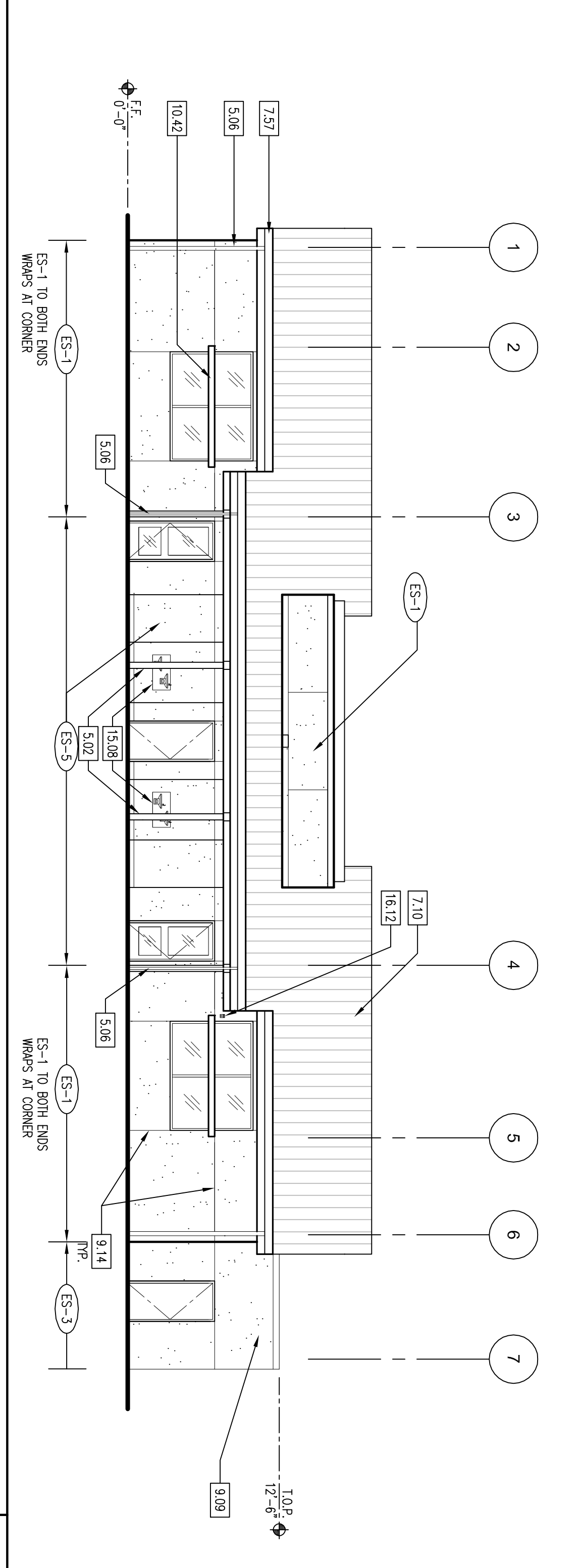
- EXTERIOR ELEVATIONS KEYNOTES**
- 5.00 MEDIA
 - 5.02 Column. See Structural Drawings.
 - 5.06 Downspout. See detail C4/A3.11.
 - 7.00 THERMAL AND MOISTURE PROTECTION
 - 7.10 Standing seam metal roofing system.
 - 7.50 Chiss B/Cross 90 uplit.
 - 7.52 Prefinished metal gutter to match metal roofing.
 - 7.56 Scauper. See detail C2/A3.11.
 - 9.00 FINISHES
 - 9.09 Cement plaster exterior wall system.
 - 9.14 Control joint. See detail A3/A9.3.
 - 9.17 Stone veneer on existing 909.
 - 10.00 SPECIALTIES
 - 10.42 Exterior Sca Control Joints.
 - 10.46 Room signage. See detail D2/A10.1. Typical.
 - 10.52 8" High dimensional letters and numbers.
 - 13.00 MECHANICAL
 - 13.08 Drinking fountain (H-Low). See Plumbing Drawings.
 - 16.12 Visual and/or Audio Alarm. See Telecom drawings.
 - 16.00 ELECTRICAL



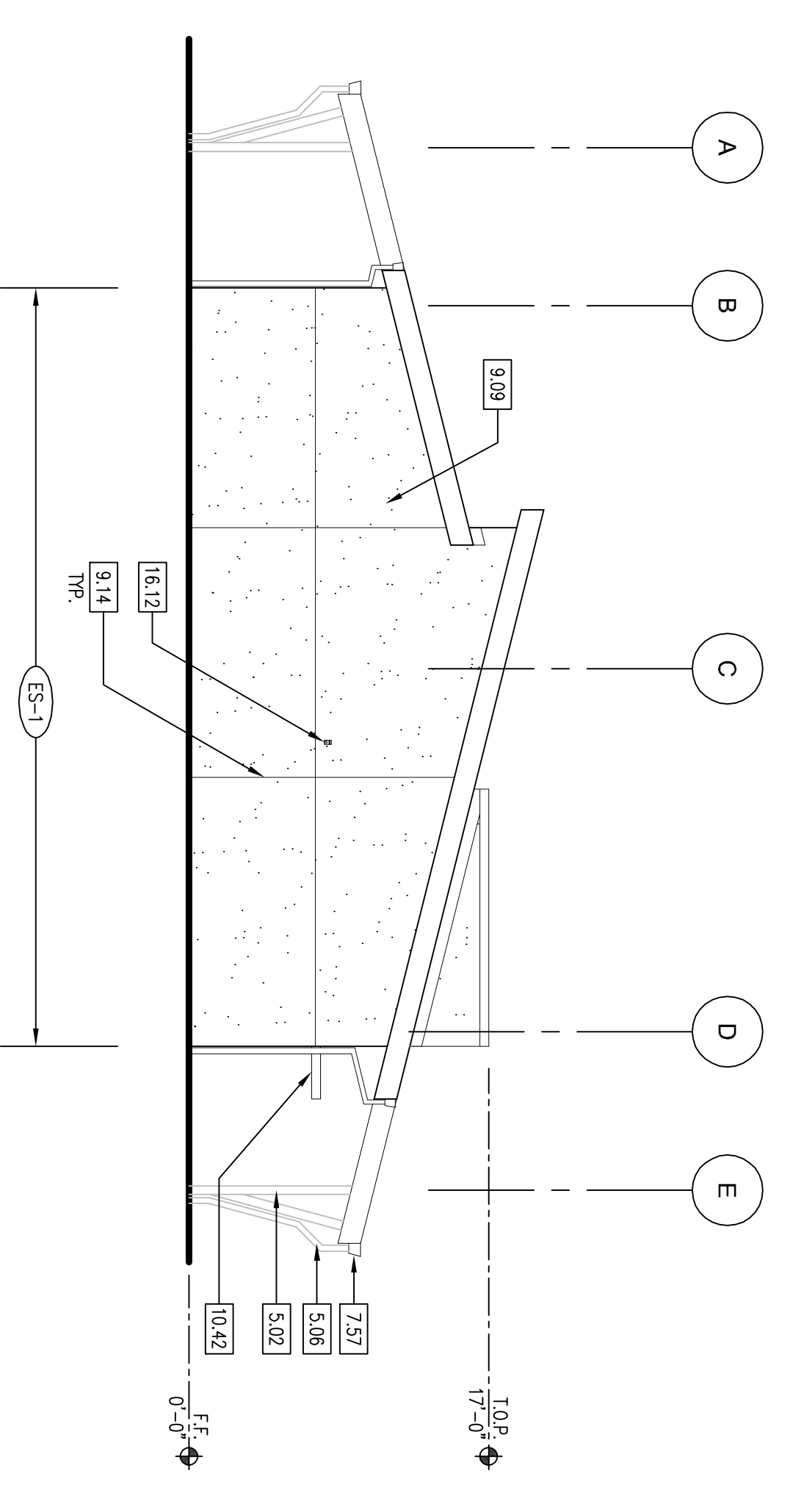
EXTERIOR ELEVATION - NORTH
1/8" = 1'-0"



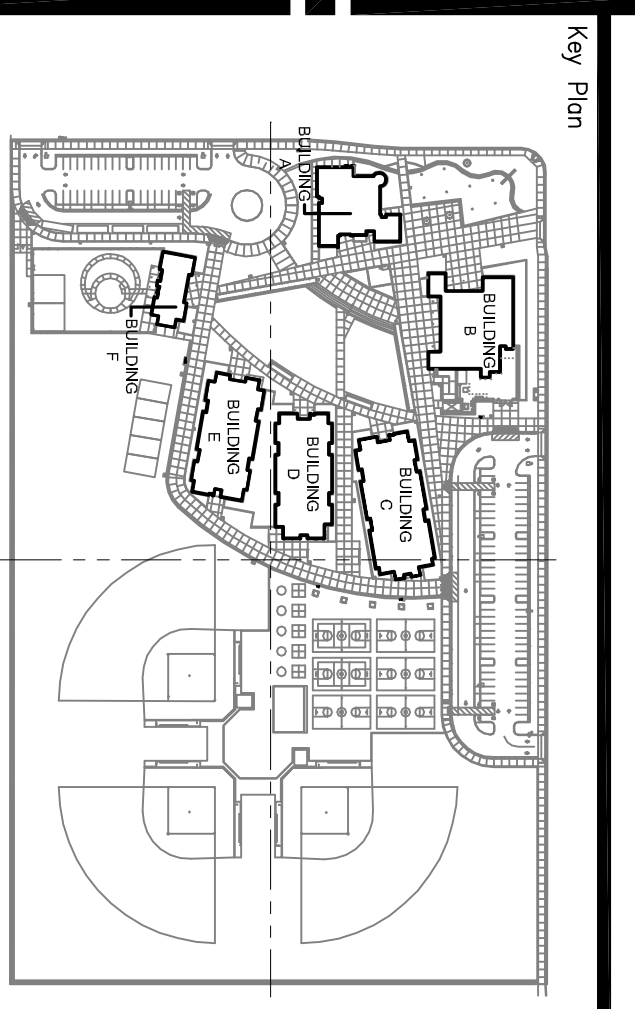
EXTERIOR ELEVATION - EAST
1/8" = 1'-0"



EXTERIOR ELEVATION - SOUTH
1/8" = 1'-0"



EXTERIOR ELEVATION - WEST
1/8" = 1'-0"



REGISTRATION STAMP
DM
OFFICE OF REGULATION SERVICES
APPL. 02-110023
AC _____ FLS _____ SS _____
DATE _____

New Construction
CLOVIS
ELEMENTARY SCHOOL
DAKOTA / ARMSTRONG
Clovis Unified School District

| No. | Description | Date |
|-----|----------------|----------|
| Δ | ADDENDUM 3 | 01.18.10 |
| Δ | DSA ADDENDUM | 11.19.09 |
| Δ | DSA BACK CHECK | 11.21.08 |
| Δ | DSA SUBMITTAL | 06.06.08 |

EXTERIOR ELEVATIONS - BUILDING F

Architect's Seal
 Design: SL, ML, BB
 Project No: 3424001
 Scale: 1/8" = 1'-0"
 Drawn: ES, JR, JH, CLO
 Date: 11.14.08
AD3-FC34
 ##